

# LIFEPAK® 15

monitor/defibrillator



## LIFEPAK 15 monitor/defibrillator

# Power options



**Mobile battery charger**  
Includes AC and DC power cords, mounting bracket and operating instructions.  
**11577-000011**



**Station battery charger**  
Includes AC and DC power cords, and operating instructions.  
**11577-000004**



**Lithium-ion battery 5.7 Ah**  
5.7 amp hour, 11.1 volt, rechargeable, with fuel gauge.  
**21330-001176**



**AC power adapter**  
Includes Right Angle Cable (AC power cord not included).  
**11140-000098**

**DC power adapter**  
Includes DC cable and Right Angle Cable.  
**11140-000074**

**AC power cord**  
**11140-000015**  
**Power attachment kit**  
**11577-000019**



**Extension cable**  
For AC/DC Power Adapter.  
**11140-000080**

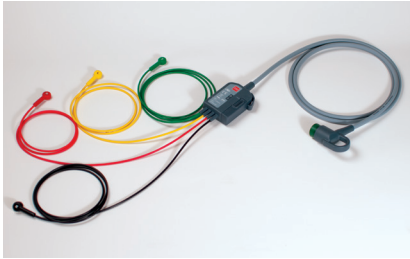


**Replacement right angle power cable**  
For AC/DC Power Adapter.  
**11140-000081**



**Replacement DC input cable**  
For DC Power Adapter.  
**11140-000084**

# ECG monitoring accessories



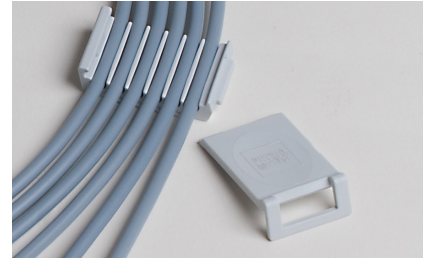
**12-lead ECG cable trunk cable with 4-wire limb leads**

11111-000018 (5ft)  
11111-000020 (8ft)



**12-lead ECG cable 6-wire precordial attachment**

11111-000022

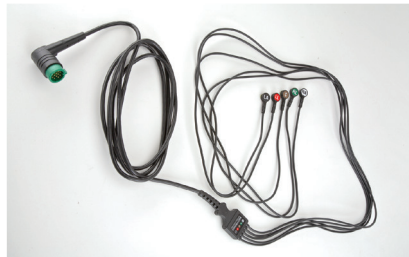


**4-wire cable comb**  
21300-008054 (10/pack)

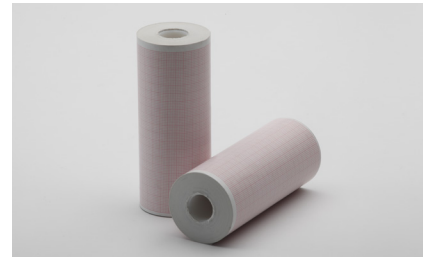
**6-wire cable comb**  
21330-008055 (10/pack)



**3-wire ECG cable**  
11110-000029



**5-wire ECG cable**  
Right-angle connector, 4-wire limb plus one chest lead, labeled "V1" on the LIFEPAK 15 monitor reports.  
11110-000066



**Box of strip chart recorder paper**  
100mm x 22m  
11240-00003 2 (2 rolls per box)



**ECG electrodes, high adhesion**

31115796 (200 3/packs, 600 total)  
31115788 (120 5/packs, 600 total)

## LIFEPAK 15 monitor/defibrillator

# Therapy delivery accessories

### Hard paddles and electrode gel



**Standard hard paddles**  
11130-000061 (1 pair)



**Pediatric paddle, external**  
(Two required); slips onto standard adult hard paddle.  
11133-000007 (1 adapter)



**SIGNAGEL® electrode gel**  
For use with hard paddles. Highly conductive, multipurpose electrolyte meets all the standards of the ideal saline electrode gel. Recommended for ECG, defibrillation, biofeedback and EMG.  
21300-005847 (8.5 oz)



**Sterilizable internal defibrillation paddles (U.S. only)**  
For use with LIFEPAK 15 and 20e defibrillator/monitors.

1 inch size  
11131-000044 (1 pair)  
1.6 inch size  
11131-000047 (1 pair)  
2.3 inch size  
11131-000045 (1 pair)  
3 inch size  
11131-000046 (1 pair)



**Internal paddle handles with discharge control (OUS only)**  
(For use with the internal paddles adapter cable)  
11131-000001 (1 pair)



**Internal paddles adapter cable (OUS only)**  
(For use with internal paddle handles)  
11998-000326



**Internal paddles (requires internal paddle handles and internal paddles adapter cable) (OUS only)**

1 inch size  
11131-000010 (1 pair, 6.25 inch shaft)  
1.5 inch size  
11131-000011 (1 pair, 6 inch shaft)  
11131-000021 (1 pair, 9 inch shaft)  
11131-000024 (1 pair, 14 inch shaft)  
2 inch size  
11131-000012 (1 pair, 5.75 inch shaft)  
11131-000022 (1 pair, 8.75 inch shaft)  
2.5 inch size  
11131-000013 (1 pair, 5.5 inch shaft)  
11131-000019 (1 pair, 8.5 inch shaft)  
3.5 inch size  
11131-000014 (1 pair, 5 inch shaft)  
11131-000023 (1 pair, 8 inch shaft)

# Therapy delivery accessories

## EDGE System™ electrodes for pacing/defibrillation/ECG with QUIK-COMBO® connector

18-month minimum shelf life remaining at time of shipment from Stryker except where noted.



**EDGE System electrodes with QUIK-COMBO connector**  
24-inch leadwire length  
11996-000091



**EDGE System RTS (radiotransparent) electrodes with QUIK-COMBO connector**  
24-inch leadwire length  
11996-000090



**EDGE System electrodes with QUIK-COMBO connector and REDI-PAK® preconnect system**  
42-inch leadwire length  
11996-000017



### Pediatric EDGE System RTS electrodes with QUIK-COMBO connector

For use only with manual monitor/defibrillators; 12-month minimum shelf life at time of shipment 24-inch leadwire length.  
11996-000093



### QUIK-COMBO therapy cable

With convenient TRUE-LOCK® cable connector. Length is approximately 8 ft. For use with LIFEPAK 15 monitor/defibrillator.  
11113-000004 (8 ft)

## LIFEPAK 15 monitor/defibrillator

# NIBP monitoring accessories

### NIBP hoses



#### NIBP tubing, straight

21300-008159 (6 ft)  
21300-008147 (9 ft)  
21300-008146 (12 ft)



#### NIBP tubing, coiled

21300-008148 (2-9 ft)

### NIBP cuffs



#### Reusable cuff

X-large adult 35 - 44 cm 11160-000019	Pediatric 13 - 20 cm 11160-000013
Large adult 32 - 42 cm 11160-000017	Infant 8 - 14 cm 11160-000011
Adult 2 26 - 35 cm 11160-000015	



#### Single patient use cuff

X-large adult 35 - 44 cm 11160-000020	Pediatric 13 - 20 cm 11160-000014
Large adult 32 - 42 cm 11160-000018	Infant 8 - 14 cm 11160-000012
Adult 26 - 35 cm 11160-000016	

# Pulse oximetry monitoring accessories

## Masimo SET® RC patient cables



**RC patient cable**  
For use with M-LNCS and Rainbow patient sensors.  
11996-000510 (5ft)  
11996-000511 (12ft)



**RC EMS patient cable**  
11996-000543 (4 ft)

## Masimo RD SET patient cable compatible SpO<sub>2</sub> sensors



**M-LNCS reusable sensor**  
11996-000456 (Ad)  
11996-000455 (Ped)



**M-LNCS adhesive sensors (20/box)**  
11171-000060 (Ad)  
11171-000061 (Ped)



**M-LNCS adhesive sensors (20/box)**  
11171-000063 (Neo/Ad)  
11171-000062 (Inf)

## Masimo RD SET patient cable compatible Rainbow® SpO<sub>2</sub>, SpCO, SpMet sensors



**Rainbow reusable sensor**  
11996-000519 (Ad)  
11996-000520 (Ped)



**Rainbow adhesive sensors (10/box)**  
119996-000517 (Inf)  
11996-000518 (Neo/Ad)



**Rainbow adhesive sensors (10/box)**  
11996-000515 (Ad)  
11996-000516 (Ped)

**LIFEPAK 15** monitor/defibrillator

## Pulse oximetry monitoring accessories

**Masimo SET LNC patient cables****Red LNC patient cable**

For use with LNCS patient sensors.

11996-000323 (4 ft)

11996-000324 (10 ft)

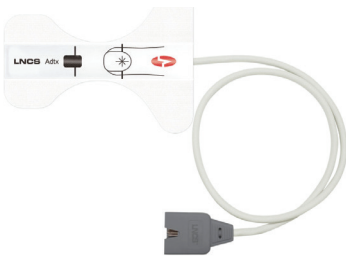
**Masimo SET LNC patient cable compatible SpO<sub>2</sub> sensors****LNCS<sup>®</sup> reusable sensor**

11171-000017 (Ad)

11171-000018 (Ped)

**LNCS reusable Soft sensor**

11171-000052 (Ad)

**LNCS adhesive sensors (20/box)**

11171-000019 (Ad)

11171-000020 (Ped)

**LNCS adhesive sensors (20/box)**

11171-000029 (Neo/Pt)

11171-000028 (Neo/Ad)

11171-000031 (Inf)



# Pulse oximetry monitoring accessories

## Direct connect SpO<sub>2</sub> only patient sensors



**Adult reusable direct connect sensor**  
11996-000331 (3 ft)



**Pediatric reusable direct connect sensor**  
11996-000333 (3 ft)

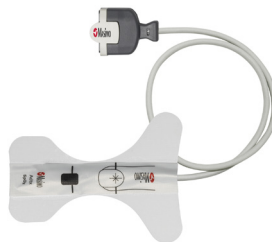


**Adult reusable soft direct connect sensor**  
11171-000053 (8 ft)

## Direct connect Rainbow SpO<sub>2</sub>, SpCO, SpMet patient sensors

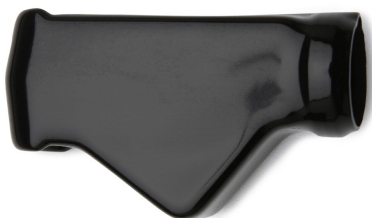


**Adult Rainbow direct connect reusable sensor**  
11996-000335 (3 ft)  
11171-000032 (8 ft)



**Pediatric Rainbow direct connect reusable sensor**  
11171-000033 (8 ft)

## Additional Masimo accessories



**Reusable ambient light shield**  
11171-000054 (5/bag)



**Disposable ambient light shield**  
11171-000055 (10/bag)

**LIFEPAK 15** monitor/defibrillator

# Pulse oximetry monitoring accessories

## Masimo to Nellcor™ adapter



**Red MNC cable**  
 Connects LIFEPAK 15 to  
 Nellcor patient sensor  
**11996-000365** (4 ft)  
**11996-000366** (10 ft)

## Masimo to Nellcor adapter compatible SpO<sub>2</sub> sensors



**Nellcor reusable SpO<sub>2</sub> sensor, adult, DS100A**  
**11996-000060** (Adult - Ref# DS100A)



**Nellcor reusable multisite SpO<sub>2</sub> sensor, D-YS**  
**11996-000106** (≥ 1 kg - Ref# D-YS)



**Nellcor reusable two-piece SpO<sub>2</sub> sensors, OXI-A/N, OXI-P/I**  
 Includes 50 disposable adhesive sensors.  
**11996-000061** (Ad/Neo)  
**11996-000062** (Ped/Inf)

**Nellcor single-patient use adhesive sensor wraps (100/pk)**

Not available in Canada.  
**11996-000048** (Ad/Neo - Ref# ADH A/N)  
**11996-000049** (Ped/Inf - Ref# ADH P/I)

**Nellcor single-patient use foam wrap**

Not available in Canada.  
**11996-000110** (Ad/Neo - Ref# FOAM A/N)  
**11996-000108** (Ped/Inf - Ref# FOAM P/I)



**Nellcor DEC-4 compatible SpO<sub>2</sub> adapter cable**  
**11110-000042** (4 ft)

**Nellcor DEC-8 compatible SpO<sub>2</sub> adapter cable**  
**11110-000176** (8 ft)

# Temperature monitoring

---

## Temperature cables



**Temperature adapter cable**

11140-000079 (10 ft)  
11140-000078 (5 ft)

**LIFEPAK 15** monitor/defibrillator

# End-Tidal CO<sub>2</sub> (EtCO<sub>2</sub>) monitoring accessories

## Microstream™ Advance short-term filter lines

Single patient use



Orange connectors designate short-term use. For use with Microstream capnography monitors and multiparameter monitors equipped with Microstream technology.



**Non-intubated filter lines:**

- Adult with O<sub>2</sub>
- MVAO** (25/pack, 200 cm)
- MVAO100U** (100/pack, 200 cm)
- MVAOL** (25/pack, 400 cm)
- Adult without O<sub>2</sub>
- MVA** (25/pk, 200 cm)
- MVA100U** (100/pack, 200 cm)
- Pediatric with O<sub>2</sub>
- MVPO** (25/pack, 200 cm)
- Pediatric without O<sub>2</sub>
- MVP** (25/pack, 200 cm)



**Intubated filter lines:**

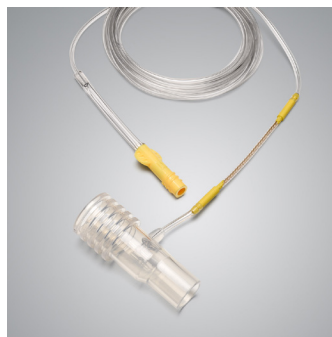
- Adult/Pediatric
- MVAI** (25/pack, 200 cm)
- MVAIL** (25/pack, 400 cm)
- MVAI100U** (100/pack, 200 cm)

## Microstream™ Advance long-term filter lines

Single patient use



Yellow connectors designate long-term use. For use with Microstream capnography monitors and multiparameter monitors equipped with Microstream technology.



**Intubated filter lines:**

- Adult/Pediatric
- MVAIH** (25/pack, 200 cm)
- Infant/Neonatal
- MVIII** (25/pack, 200cm)

# Cases and mounting options



**Standard carrying case**  
Includes right pouch and left pouch, for use with LIFEPAK 15 monitor/defibrillator.  
**11577-000002**

**Top pouch**  
Storage for sensors and electrodes; insert in place of standard paddles.  
**11220-000028**

**Shoulder strap**  
For use with LIFEPAK 15 monitor/defibrillator.  
**11577-000001**

**Back pouch**  
Ideal for additional accessory storage. For use with LIFEPAK 15 monitor/defibrillator.  
**11260-000039**



**Bed connector**  
For use in hospital only.  
**11996-000374**

## Communication accessories



**LIFEPAK monitor to PC cable**  
For connecting LIFEPAK 12 or LIFEPAK 15 monitor/defibrillator to PC.  
**11996-000369 (USB)**



**Titan III wireless gateway**  
For transmitting data from LIFEPAK 15 to the LIFENET<sup>®</sup> system or CODE-STAT<sup>™</sup> data review software. Requires existing wireless network.  
**21996-000109** (wireless gateway)  
**11996-000479** (wireless/cellular/audio gateway) - For use with Stryker Verizon data plan  
**11996-000484** (wireless/cellular/audio gateway) - For use with Stryker AT&T data plan  
**11996-000480** (wireless/cellular/audio gateway) - For use with customer data plan



**4G gateway**  
For transmitting data from LIFEPAK 15 to the LIFENET system or CODE-STAT data review software. Requires data plan.  
**11996-000476** (AT&T gateway)  
**11996-000474** (Verizon gateway)  
**11996-000471** (Verizon gateway - for use with Stryker data plan)  
**11996-000475** (AT&T 4G Kore modem/MultiTech cellular only)

**Stryker Data Plans**  
**99428-000305** Verizon data plan 1-year  
**99428-000304** AT&T data plan 1-year

# LIFEPAK 15 monitor/defibrillator

## Testers and training materials

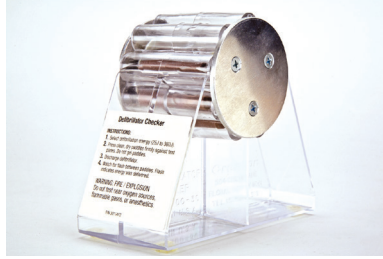


### 12-lead patient simulator (QUIK-COMBO)

Connects directly to your LIFEPAK defibrillator for safe simulation of cardioversion and electrical capture. Generates fibrillation, tachycardias, and bradycardias, as well as ST segment and T wave abnormalities. For use with LIFEPAK devices with a 12-lead ECG feature.  
**11996-000311 (12-Lead)**

### 3-lead patient simulator (QUIK-COMBO)

Connects directly to your LIFEPAK defibrillator for safe, interactive training. Select from 17 ECG rhythms including: fibrillation, tachycardias and bradycardias.  
**11996-000310**



### Defibrillator checker

Tests integrity of energy delivery through standard hard paddles. Neon light indicates energy has been delivered.  
**11998-000060**



### Test load

Use to perform therapy cable performance checks. Connects to the QUIK-COMBO therapy cable on the defibrillator.  
**21330-001365 (English only)**  
**21330-001367 (English, French for Canada)**

## Training tools



**Operating instructions: LIFEPAK 15 monitor/defibrillator**  
 Also available as free online download at <https://ifu.stryker.com>  
**26500-002408**

**For further information, please contact Stryker at 800 442 1142 (U.S.), 800 668 8323 (Canada) or visit our website at [stryker.com](http://stryker.com)**

## Emergency Care

Stryker or its affiliated entities own, use, or have applied for the following trademarks or service marks: CODE-STAT, EDGE System, LIFEPAK, REDI-PAK, QUIK-COMBO, Stryker, TRUE-LOCK, Masimo, the Radical logo, Rainbow and SET are registered trademarks of Masimo Corporation. All other trademarks are trademarks of their respective owners or holders.

The absence of a product, feature, or service name, or logo from this list does not constitute a waiver of Stryker's trademark or other intellectual property rights concerning that name or logo.

US-CA 11/2023  
 Copyright © 2023 Stryker

M0000017143 REV AA

### Distributed by:

Physio-Control, Inc.  
 11811 Willows Road NE  
 Redmond, WA, 98052 U.S.A.  
 Toll free 800 442 1142  
[stryker.com](http://stryker.com)

### Distributed by:

Stryker Canada  
 2 Medicorum Place  
 Waterdown, Ontario  
 L8B 1W2  
 Canada  
 Toll free 800 668 8323